

COLORClip®

MASK

## COLORClip DIGITAL MASK - INSTRUCTIONS OF USE

### Introduction :

COLORClip Digital Mask is a system that, for the first time, allows the optician to make a sunshield polarizing mask for virtually any style of eyeglasses. The Mask is made to measure and allows a multitude of creations.

The result is a custom product, aesthetics, light and reliable.

3 steps processing:

- Design the cutting shape using the COLORClip Digital Mask software
- Upload the Mask to be milled at the remote workshop or to the in situ device
- Final assembly of soft hooks on the Mask at optician's store

### Principle:

The optician captures the image of the frame to be equipped using the provided camera shooting stand. This image is imported into the COLORClip software as a background for creating the shape of the Mask. The software is intuitive to use, the design of the shape is easily made within few clicks. The optician validates his drawing by printing a copy at scale 1/1. The cutting file is then electronically forwarded to the digital milling machine driven by computer. Allow 48 hours for delivery. Upon receipt of Mask cut, the optician then proceeds to the final assembly of the Mask on the eyeglasses ; by inserting the flexible hooks with the help of the exclusive COLORClip punch pliers. Another alternative is to make the cut in the optician's workshop if it is equipped with a milling device.

**Installing software:** Operating System Windows 98SE, XP, Vista, 7  
COLORClip Software

On the CD-ROM provided, or after internet download, optician launches COLORClip setup. This will create a directory on the hard disk of the computer with proposed named COLORClip. The choice of language is available to the user.

The installer creates a shortcut icon on the desktop of the user.

Then do an update

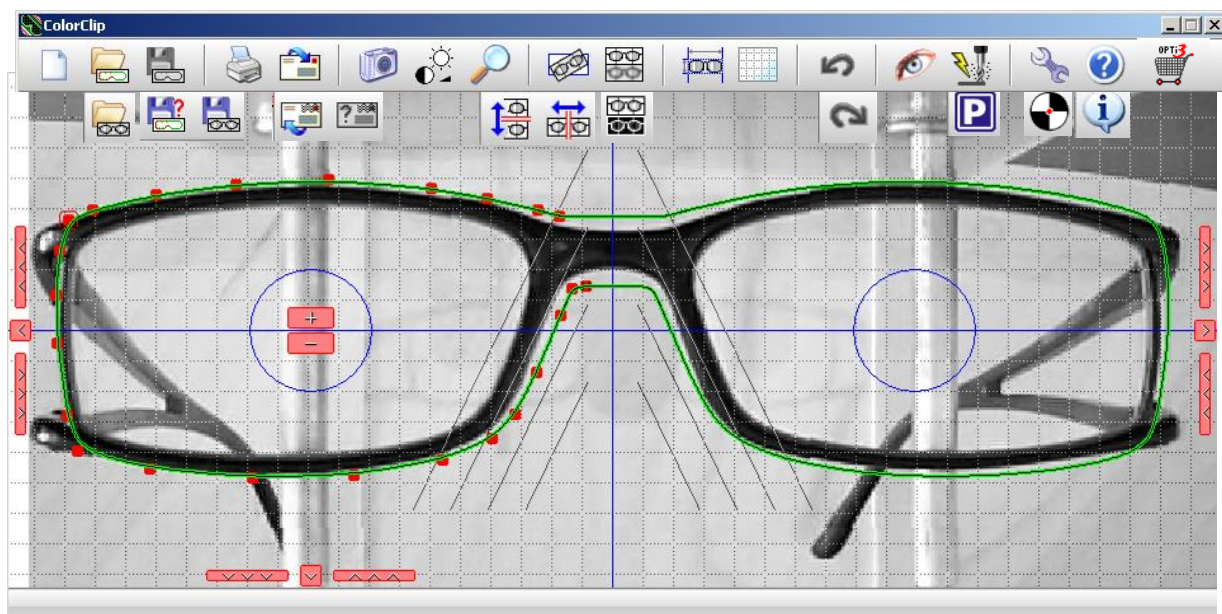


Webcam management software and driver

Install the software before plugging the camera.

Note: If the computer has already camera driver or cameras installed; when using the software COLORClip, the computer asks the user which device he wishes to use. Choose the Hercules one.

## Software preview



**To make a Mask, start by clicking on shooting icon**



The software for image capture opens. Click on Capture to send the image to the COLORClip software. Make sure to position the frame straight on the shooting stand to comply horizontality.

Note: It is recommended to have a background on the shooting stand for rimless eyeglasses and a white background for rimmed eyeglasses.

If necessary setting of capture software is 640x480 format, RGB compression 24.

### **Optimization of the picture frame:**

The visualization of the image frame is optimized thanks to the following functions:



Magnifier: Sets the size of the captured image



Brightness and Contrast adjustments



Negative picture and hidden picture (3 modes)



Image rotation for horizontal adjustment




Horizontal inversion



Vertical inversion

### **Centering of the picture frame:**

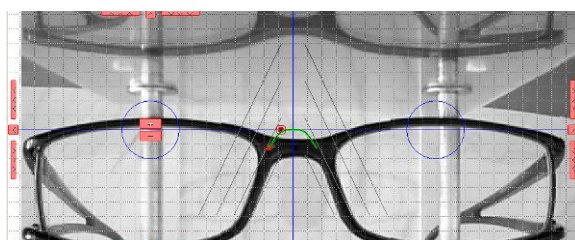
Hold down the right mouse button and drag the image to the center of the screen. Use the horizontal, vertical, circular (in blue) and oblique reference marks.

A more precise shift of the image is obtained by using the on- Ctrl Key simultaneously with the Arrows keys on the keyboard

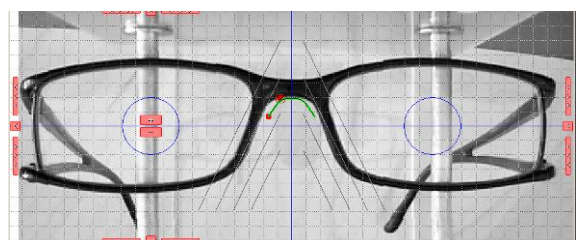


The grid offers three modes of visualization

Not centered picture



Centered picture

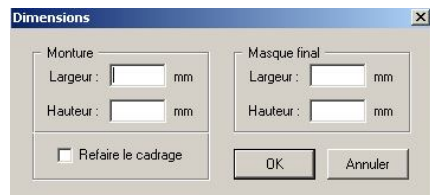


(Optional)

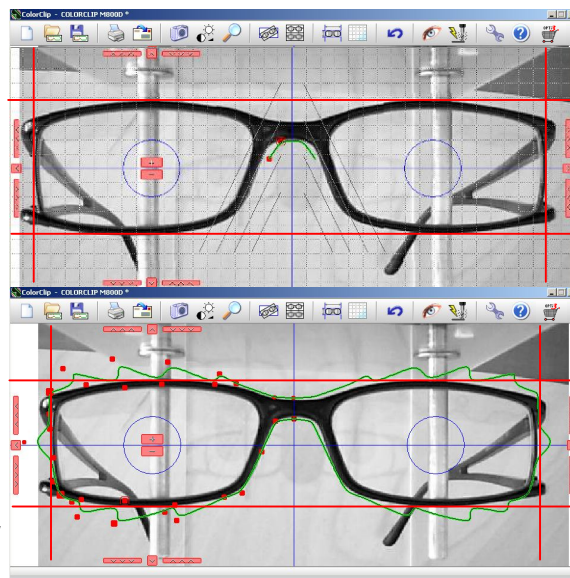


## Reference Size Box

This option lets you tell the software the size of the frame by drawing a rectangular reference size box and inputting its length and depth. So that it automatically determines the size of the Mask according to the shape that will be designed.



Really helpful for making a mask that does not follow quite the contour of the frame or original forms.



## Creating the shape of the Mask

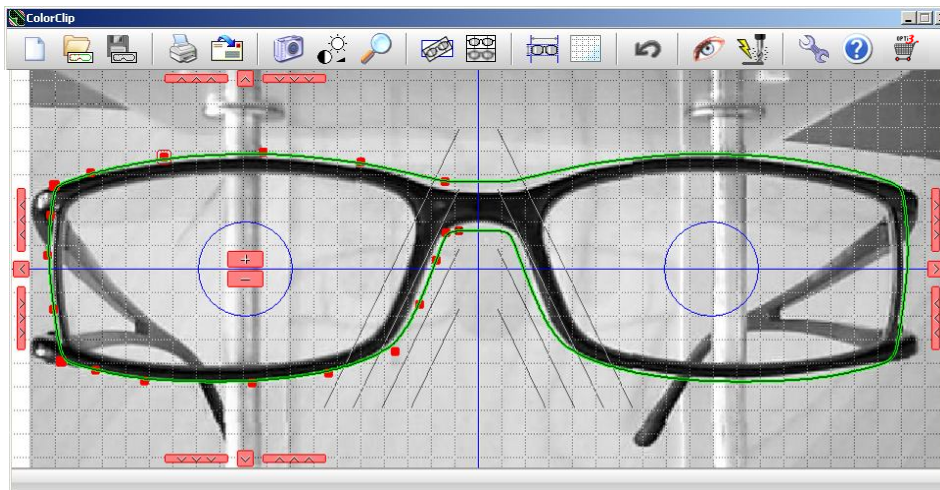
The principle is to make few left clicks around the right eye of the frame (left on the screen), starting under the nose part. Different points clicked are automatically connected by a curve. The software works in symmetry on both eyes and the curve will close itself once half of the circles are drawn. It will be possible then to add, to delete or to move the points.



## Starting a new job

The software then proposes the first two points of contour shape from under the nose. These first two points are only an indication. It is possible to cancel or move them (see Edit the Shape – Moving and Deleting points)

Move one of the first points for correct positioning.



The contour appears green, the various points are represented by red squares.

## Viewing the final appearance of the Mask





## Editing the shape

### 1 ° Moving points

Select one by clicking on it, it becomes surrounded by a squared box. The point can then be moved with the mouse with the left button by clicking and dragging. A selected point can also be moved more precisely with the keyboard arrow keys (Up, Down, Right and Left)

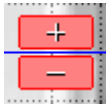
### 2 ° Deleting points

A selected point is removed by the Delete key on the keyboard

### 3 ° Inserting points

Left click anywhere between two points adds another one.

### 4 ° Weight of the points



Icons + and - in the center of the left circle on the screen can change the weight of the point selected. The higher the weight, the higher the curve is forced to pass through the point. And heavy weight provides straighter angles. The weight of each point is proportional to the dimension of the red square representing it.

### 5 ° Changing a part of the overall contour



To expand or reduce a portion of the overall contour (top, bottom, nasal or temporal) use the triple pink arrows on either side. This is very handy when you want to adapt a registered shape to a new frame.

### 6 ° Moving overall contour



The four simple pink arrows move the overall contour up, down, left and right for re-centering.

### 7 ° Cancellation of a change

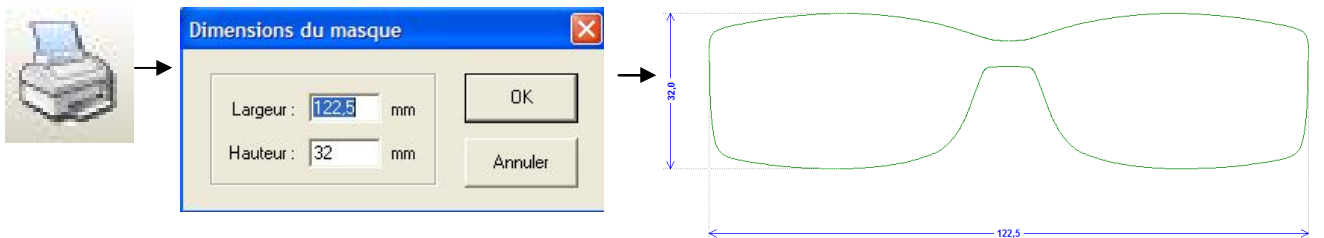


This icon cancels the last change.

This icon redoes the action that has been cancelled

## Checking of the outline printing on paper

This is the step that defines the dimensions of the Mask desired width and height and to verify the quality and accuracy of the design by superimposing the frame on the printout



### **Sizing Limits:**

The precision machining can be requested from 1/10mm

Measuring sizes taking into account the curve of the frame.

Limited current sizes Mask are included in width between 80 and 140 mm. In height between 20 and 44 mm.

**Tips :** Make a mask of height at least 1 mm. higher of the frame. It is more comfortable for the wearer to avoid light coming from the projection in front of the mask relative to the eye-glasses. Draw an outline enough inside the nose. Avoid a height (thickness) of mask in the nose too low for the sake of fragility. A minimum height of 4mm is recommended. A warning indicates a cutting risk.

## Files Management



### Ordering remote cutting to external laboratory (eg lab1@colorclip.com)

Email to the laboratory: [lab1@colorclip.com](mailto:lab1@colorclip.com)

### Automated procedure of sending e-mail files for remote cutting service

#### Tips :

All fields will be stored once filled, only the part related to the pending order will be filled

For SMTP settings, indicate the ones of your Internet access provider.

If you want to keep a copy of the file to send, select the check box.

If you have a problem with this method, select the "save the file without sending" in order to send by e-mail the (.Cpo) file created and saved in the folder "Colorclip / mail".



Access the list of mask orders sent by e-mail



#### Saving files.

Any directory can be created to classify records (customers, manufacturers, catalog personal shapes ...).



This icon offers to save work with the desired name for sending to the laboratory COLOR-Clip. Are simultaneously stored in two files the background picture. Bmp format and the cutting file proprietary format. Clc

It is possible to record only the cutting file by unchecking the box in the Settings menu.



Save the the background picture only. Bmp format.



Simultaneous opening of a cutting file with its background picture.



Opening a picture background alone.

It is thus possible to use a predefined cut file, open it, then open another picture background. Few dimensional changes or movement of nodes will adapt the cutting path to the new frame.



Opening help file text.



Software's number version display



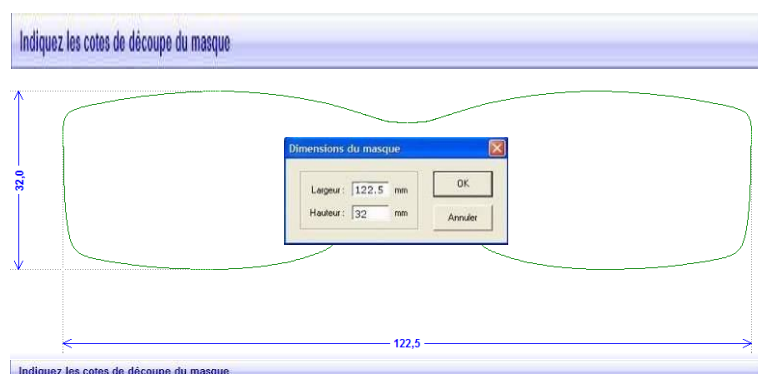
link to the Opti3 online store

## For those who own the milling machine Launch of the machining

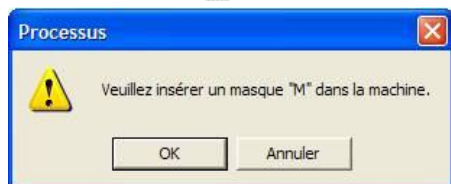


This part is only for owners of the COLORClip digital milling device.  
During the cutting cycle is recommended for some computers to shut down applications that might interfere with the piloting of the mill (a screen saver, internet messaging and possibly firewall).

The launch of the machining begins with the validation of dimensions of the Mask to be cut:



It is then prompted to insert the appropriate size of blank Mask inside the machine Mask Medium, Large or XL (in preparation).



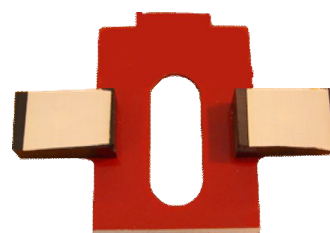
Slide the mask in the appropriate rack, paste adhesive pads provided on the black parts of the red clasp and place it on the bracket. Press firmly the mask against adhesive pads.

Tip:

We recommend to double the thickness of the adhesive and use it several times.



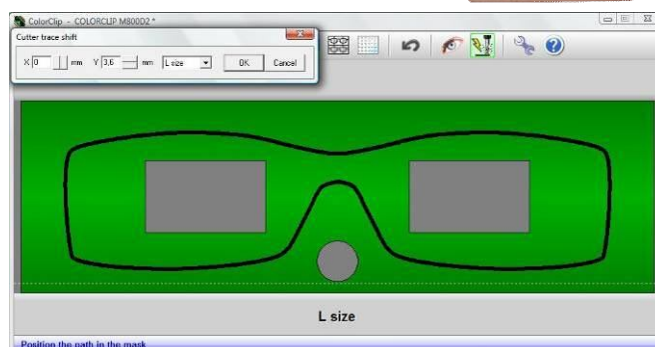
Place the rack into the machine by inserting the first left and then locking it right



It is then possible to adjust horizontally (not recommended) and vertically the cutting inside the blank mask. Warnings appear highlighted in red on error.

The 'OK' button starts the cutting cycle. 'Cancel' returns to the definition of the outline.

After launching the 'Stop' button stops the current cutting cycle

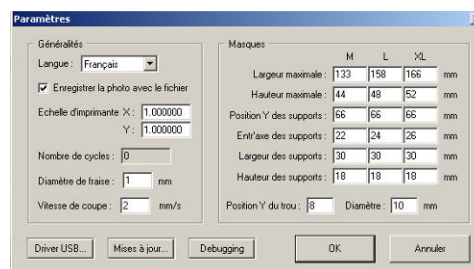


In case of interrupted cutting cycle, remove the Mask and its support, close and reopen the software COLORClip. Then recalibrate the mill by sending to its parking point location (see below).

## Parameters and Settings



### Accessing application settings



Keep unchanged all settings unless otherwise specified.  
Download regular updates of the software.



### Manual setting of parking location

**The mill bit must be centered in the circular hole of the blank Mask.**

Move it manually using the arrows in 1 or 0.1 mm steps



Validate and record the new position.



Return of the mill bit to parking position.



Return to the reference 0 machine - to be used before transporting the machine.



Spindle motor test - starting and stopping, requires the closure of the cover.

## CARE AND MAINTENANCE OF THE COLORClip MILLING DEVICE

### Access to different parts of the machine

- Electronic board and power supply : unplug the power and unscrew the 4 screws on the rear panel of the machine.

- 2-axis milling system: remove the tray receptacle at the bottom of the machine. Tilt the machine back.

### Cleaning the dust cuts

- Intake / exhaust regularly using a brush for cutting chips that have accumulated on the plate around mill bit and spindle motor.

### Replacement of the mill bit: Use 2mm hex key provided.

- Unscrew the screw on the axis of the chuck, remove and replace the bit, tighten the screw axis.
- The mill bit has a lifespan of several hundred cuts.



## Final Assembly of the MASK with soft hooks

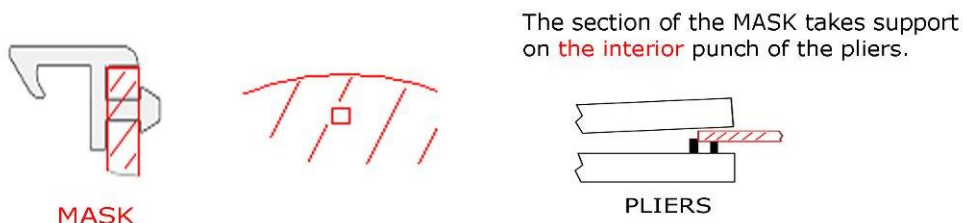
### COLORClip MASK INSTRUCTIONS OF USE

#### OPENING REMARKS WITH THE ASSEMBLY OF COLORClip MASK

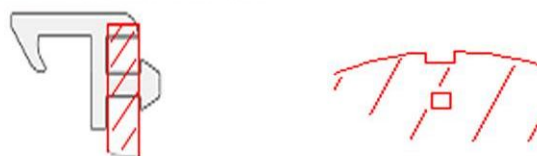
- 1/ Not to **remove protective films** of the MASK before to have **finished** the assembly.
- 2/ One distinguishes **three alternatives for the fixing** of the attaches according to their position compared to the edge of the MASK.

One will thus use the punch pliers in **three different ways**:

**A/ attach is tangent** to the edge of the MASK (only 1 hole per soft hook)



**B/ attach is biting the edge** of the MASK (1 hole and a one simultaneous notch per soft hook)

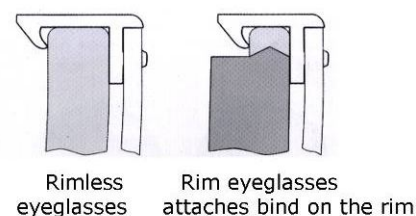


**C/ attach is inside the MASK** (2 simultaneous holes per soft hook)

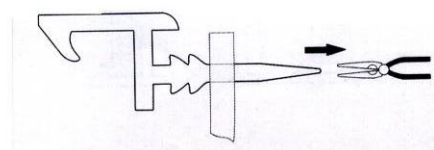


Refer to our tips for an accurate punching

- 3/ The choice length of the attaches depends on the **thickness of the frame** or that of the ophthalmic lenses in the case of rimless or semi rimless eyeglasses.



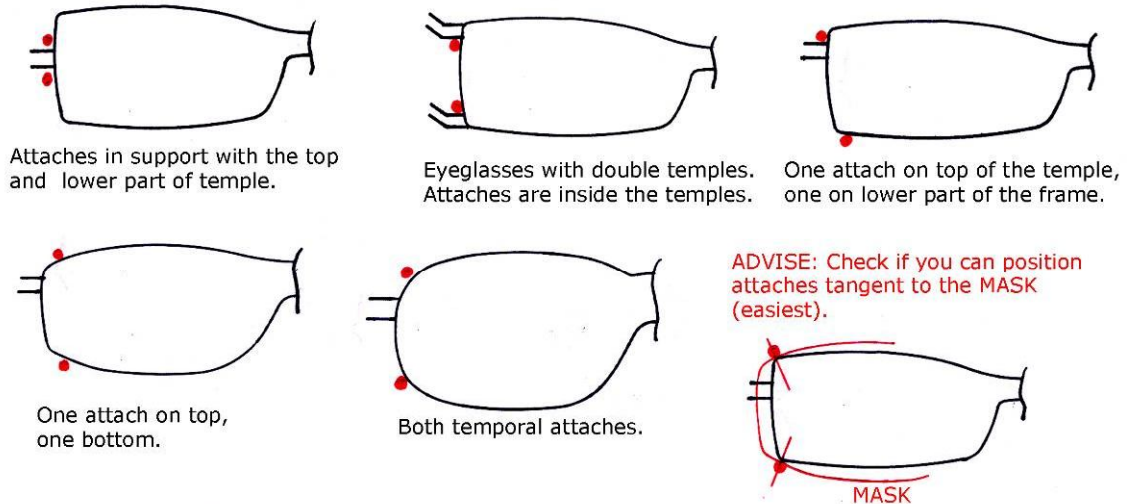
- 4/ The assembly of the attach on the MASK is done by **introducing the arrow end** of the soft hook from the internal side of MASK. Then by pulling on the end using flat- nose pliers to make the **two pins** come through.



## STAGES OF ASSEMBLY

- 1/ Position the MASK on the frame and mark the optimal locations of the attaches using preferably a white felt pen.

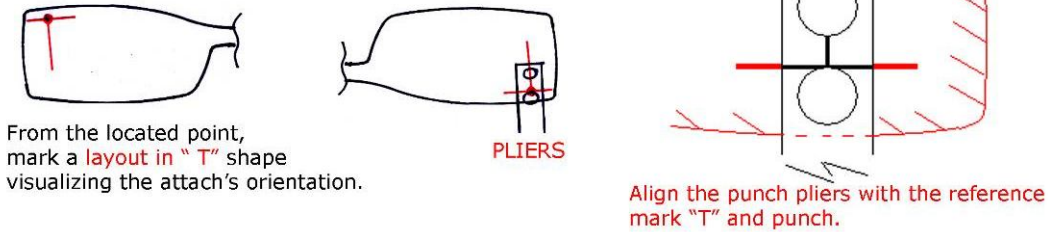
### SEVERAL POSSIBLE POSITIONINGS



- 2/ Assemble the first two attaches (upper or lower). If two attaches are assembled tangent in MASK, start with those.
- 3/ Locate and assemble the two following attaches.
- 4/ Cut the ends of the attaches opposite external MASK and remove protective layers.

## ADVISES and TIPS

- Take time to seek the position that seems to you optimal for the attaches.
- For an accurate perforation with two holes per soft hook
 



From the located point, mark a layout in "T" shape visualizing the attach's orientation.

PLIERS

Align the punch pliers with the reference mark "T" and punch.
- Use in upper part the curved attachments (N° 4C) for certain acetate frames with round profile.
- If need be, slightly adapt and bend by hand the curve of MASK to that of eyeglasses by working the nasal part of MASK.
- Take care that the hooks are not tight too much when Mask is fixed on the eyeglasses.